

The Institute of Psychoanalysis @10 Windsor Walk: the Maudsley Collaboration

Sub-committee:

Chair: Emma Staples Hotopf

Sub-committee members: Maxine Dennis, Antje Netzer-Stein, Anne Patterson, Rupert Nieboer, Anne Ward, Kate Pugh

The Institute of Psychoanalysis now has a home in South London that backs onto the Maudsley hospital and Institute of Psychiatry, Psychology and Neuroscience and is adjacent to Kings College Hospital.

Ten Windsor Walk is now a location for the Maudsley Lectures in Psychoanalysis, it has rooms for candidates and other analysts and can provide a forum for other IoPA events. This venture will support candidates and analysts in South London and develop interest in psychoanalytic ideas locally in South London particularly through links with clinicians working in NHS settings.

The Maudsley Lectures in Psychoanalysis are in their 4th year and continue to attract an engaged group of participants. In the Autumn term, while 10 Windsor Walk was being prepared, we held the lectures at the Institute of Psychiatry, Psychology and Neuroscience. Some participants mistook the bust of Henry Maudsley for Freud. Since January the lectures have been held at 10 Windsor Walk, Denmark Hill, South London.

The Maudsley Lectures in Psychoanalysis are a rolling programme of lectures that cover both core concepts in psychoanalysis and their applications. Clinical work has been central to the presentations. The series is orientated to particularly appeal to clinicians: psychiatrists, psychologists, psychotherapists, mental health nurses and allied professionals working in mental health. However it is open to anyone interested in psychoanalytic ideas. They are attracting both local mental health professionals from the South London and Maudsley NHS Trust and psychotherapists, psychoanalysts, academics and other professionals from elsewhere. The content of the lectures has covered all schools of thought. South London comprises ethnically and culturally diverse communities and we hope to reflect this diversity both within the audience and the lecturers. We attracted a diverse audience in this series.

There have been a wide range of talks this year: the Autumn term focused on psychoanalytic consultation and the Spring term on the relationship between mind and body. Due to limited capacity at 10 Windsor Walk we have only allowed termly enrollment for both lecture and discussion group this year. This has the advantage of a group getting to know each other and can lead to greater depth to the discussions.

Autumn Term: Psychoanalytic consultation

8 October | Irma Brenman Pick - **Authenticity in the Analytic Encounter**

15 October | Kannan Navaratnem - **Affective Responses and Inner Experiences: Psychoanalytic Perspectives on Countertransference**

29 October | Stephen Blumenthal - **Violence as tragedy, violence as tyranny**

5 November | Jane Peringer - **Repression, Regression, Reaction Formation: the intriguing workings of the obsessional mind**

12 November | Jo Stubbley - **A Psychoanalytic Approach to the Assessment of Complex PTSD**

19 November | Kathy Taylor - **Working Psychoanalytically with Psychosis in the NHS**

26 November | Jim Rose - **Helping Adolescents in Difficulty: Whose problem is it anyway?**

3 December | Estela Rubinstein Gloger - **Psychoanalytic Consultation: Evaluation or Exploration?**

10 December | David Taylor - **The Psychoanalytic Assessment of Patients with Depression: the Importance of a Point of Emotional Contact**

Spring Term: The relationship between mind and body

14 January | Gearoid Fitzgerald - **Minding Somebody: Use of a Balint group to metabolise the impact of self-harm**

21 January | Kate Pugh - **Hypochondriasis: a symptom in search of an author**

28 January | Francois Louw - **Pain Actually**

4 February | Julian Stern - **“The sorrow which has no vent in tears makes other organs weep”: Does the gut still weep in the 21st Century?**

25 February | Bernard Roberts - **The Hidden Secret - Ego distortion in facial deformity: some reflections on the analysis of an adolescent boy.**

4 March | Catalina Bronstein - **The body and its boundaries**

11 March | Anne Ward - **A psychoanalytic approach to pregnancy and the perinatal period**

18 March | Jane Peringer - **Looking, seeing, not looking, not seeing** (replacement lecture for Michael Brearley - Sport and Psychoanalysis)

25 March | Susan Lawrence - **“He is always thinking, thinking. Where? In his head? Or in his stomach?” The cerebral mind versus the body mind**

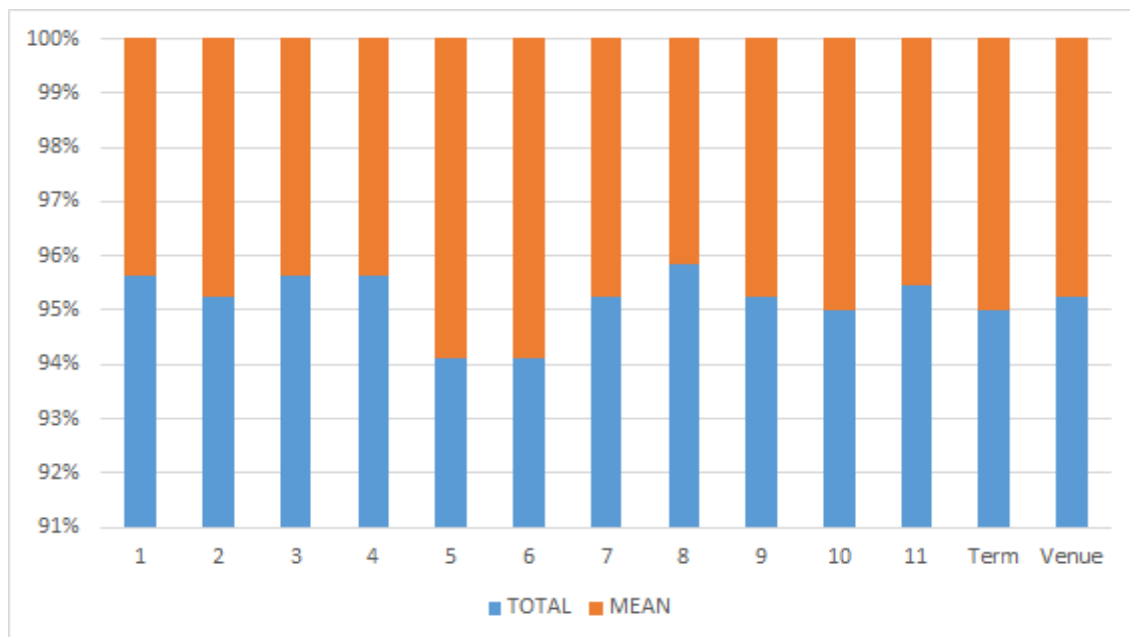
1 April | Rosine Perelberg - **The riddle of anxiety: between the drives and their representations**

Total number of attendees: 46 each term attending lectures and seminars

Feedback:

Students were asked to rate the term overall, the venue and their experiences of each lecture on a scale of 1 to 5. This data is collated from 24 feedback forms. Not all students were present for all 11 lectures.

WEEKS	1	2	3	4	5	6	7	8	9	10	11	Term	Venue
TOTAL	94	81.5	96.5	101.5	71	70.5	94.5	98	89	87	95	78.5	82
MEAN	4.27	4.08	4.39	4.61	4.44	4.41	4.73	4.26	4.45	4.58	4.52	4.13	4.10



We are grateful for the sustained work of analytic colleagues at SLaM, Oxleas and St Georges who continue to create an appetite locally for psychoanalytic thinking. We are indebted to all of those who have helped promote the lectures and encouraged supervisees and colleagues to participate. Thanks to all those who have come to give talks. Special thanks to Luke Perry, Natasha Georgiou and Greta Adorno.

Other Courses and events run at 10 Windsor Walk:

2018/19:

Therapeutic Relations: Psychoanalytic course for nurses: 30 nurses from the South London Partnership have attended a series of 20 afternoons of lectures and clinical discussion groups lead by Marcus and Sue Evans. This was supported by a grant from the Maudsley Charity and the South London and Maudsley Trust. Feedback was very enthusiastic with the series having a positive effect on their work with patients.

Reflective practice group for newly qualified clinical psychologists in South London: lead by James Easton

Planned:

Mother/toddler group

Father's group

Psychoanalytic film events with discussion.

10 Windsor Walk: progress

10 Windsor Walk is currently leased from the Maudsley Charity and we are raising the funds to purchase the house. We are in discussion with social investor groups who are interested in supporting the provision of accessible intensive psychoanalytic treatment to those in need locally. In order to maximise our fund-raising capability a social enterprise (Community Interest Company) has been established. This is an exciting opportunity to have a more extensive collaboration with the South London and Maudsley NHS Foundation Trust (SLaM), the largest provider of mental healthcare in Europe. SLaM and the Institute of Psychiatry, Psychology and Neuroscience provide major training programmes for mental health professionals including the largest training centre for psychiatrists in the UK. We hope to promote psychoanalytic thinking and be considered a pilot for future initiatives involving partnership between the IoPA and NHS providers.

We would be pleased if you would like to be involved in these developments, give a lecture, or a donation please do get in touch.

Emma Hotopf, Maxine Dennis, Antje Netzer -Stein